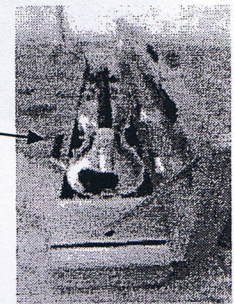
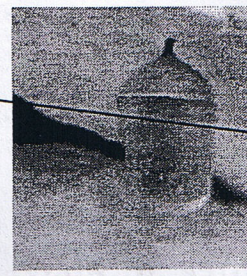


And the badger in its bedding  
Like a loaf in the oven.

Hughes uses **simile** to compare the way a Badger snuggles down in its 'bedding' in its underground burrow to keep warm to a loaf of bread cooking in its low heat in an oven. This is a positive, comforting image of nature [the badger] fitting into its winter world comfortably.



And the butterfly in its mummy  
Like a viol in its case.



Hughes uses **simile** to depict the butterfly being comfortably tucked up in its nice warm cocoon during the winter just like a violin, or viola, is safely wrapped in its case. He does this to show that the butterfly [nature] is safe and comfortable with its winter habitat.

And the owl in its feathers  
Like a doll in its lace.



Hughes uses **simile** to compare the owl puffed up in its feathers to a doll puffed up in lace. He does this to depict a fluffy, well-covered bird, which could cope well with freezing conditions.